



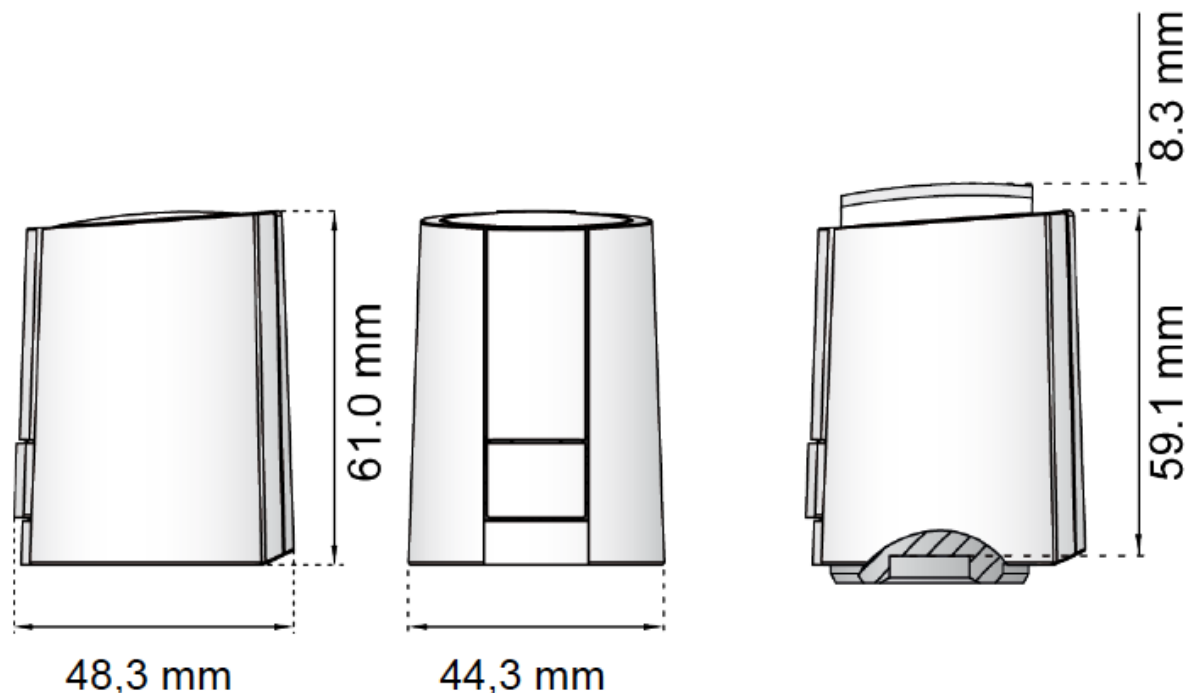
# Airobot heating control actuator 230V NC

## A-HC-A230

### Specifications and dimensions

The actuator is suitable and compatible with the Airobot thermostat

Type	NC normally closed
Supply current	230 V AC, -10 %...+10 %, 50/60 Hz
Liver. power	< 550 mA. 100 ms
Power	1.2 W
Actuator movement	4 mm
Opening time	~4.5 min
Surround temperature allowed	0 °C to +50 °C
Protection class	IP 54
Protection class	II
CE Conformity	EN 60730
Cable	2 x 0.75 mm <sup>2</sup> PVC, 1 meter
Weight with cable	110g
<b>Actuator adapter</b>	1pcs VA80 M30 x 1.5





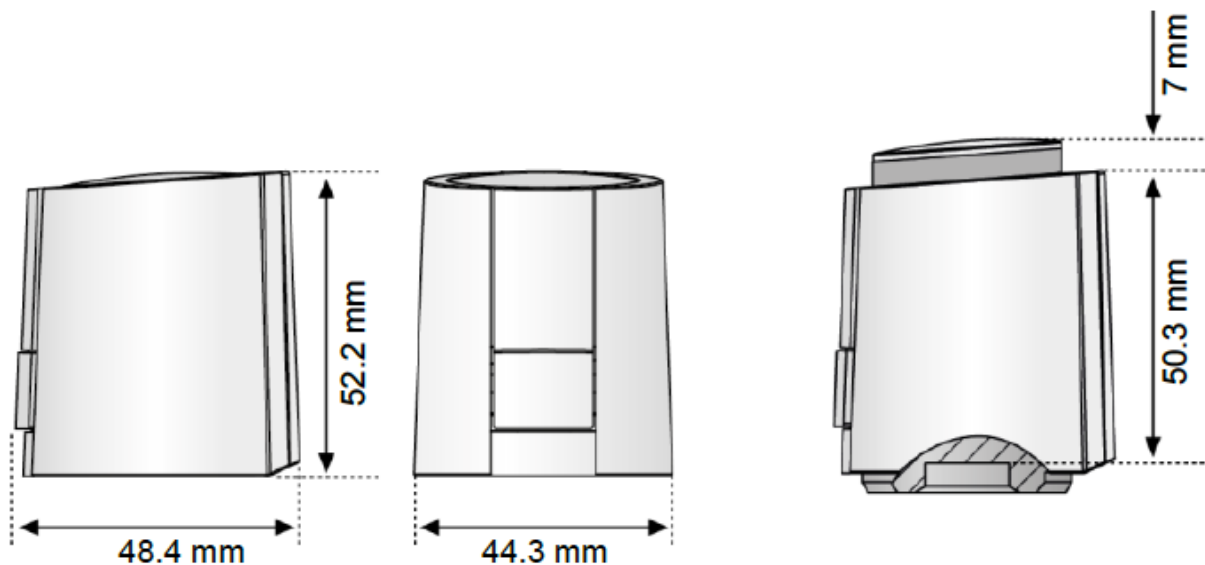
# Airobot heating control actuator 24V NC

## A-HC-A24

### Specifications and dimensions

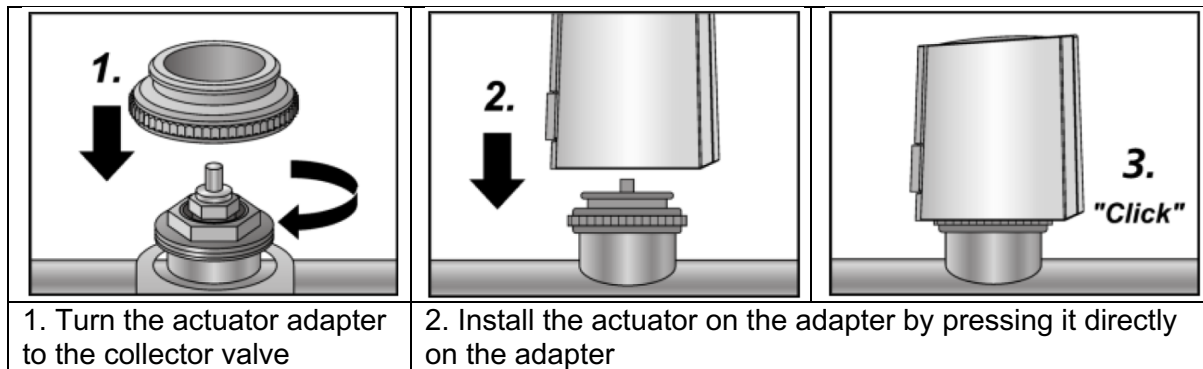
The actuator is suitable and compatible with the Airobot room controller

Type	NC normally closed
Supply current	24 V AC/DC, +20%...-10%
Liver. power	< 300 mA tax. 2 min
Power	1 W
Actuator movement	4 mm
Opening time	~4.5 min
Surround temperature allowed	0 °C to +50 °C
Protection class	IP 54
Protection class	II
CE Conformity	EN 60730
Cable	2 x 0.75 mm <sup>2</sup> PVC, 1 meter
Weight with cable	100g
<b>Actuator adapter</b>	1pcs VA80 M30 x 1.5





## Installation on the heating collector



## Connection to the thermostat

Establish an electrical connection according to the installation instructions of the thermostat or room controller.

## Explanation of the working principle

